

Arizona's Freight Transport An Overview

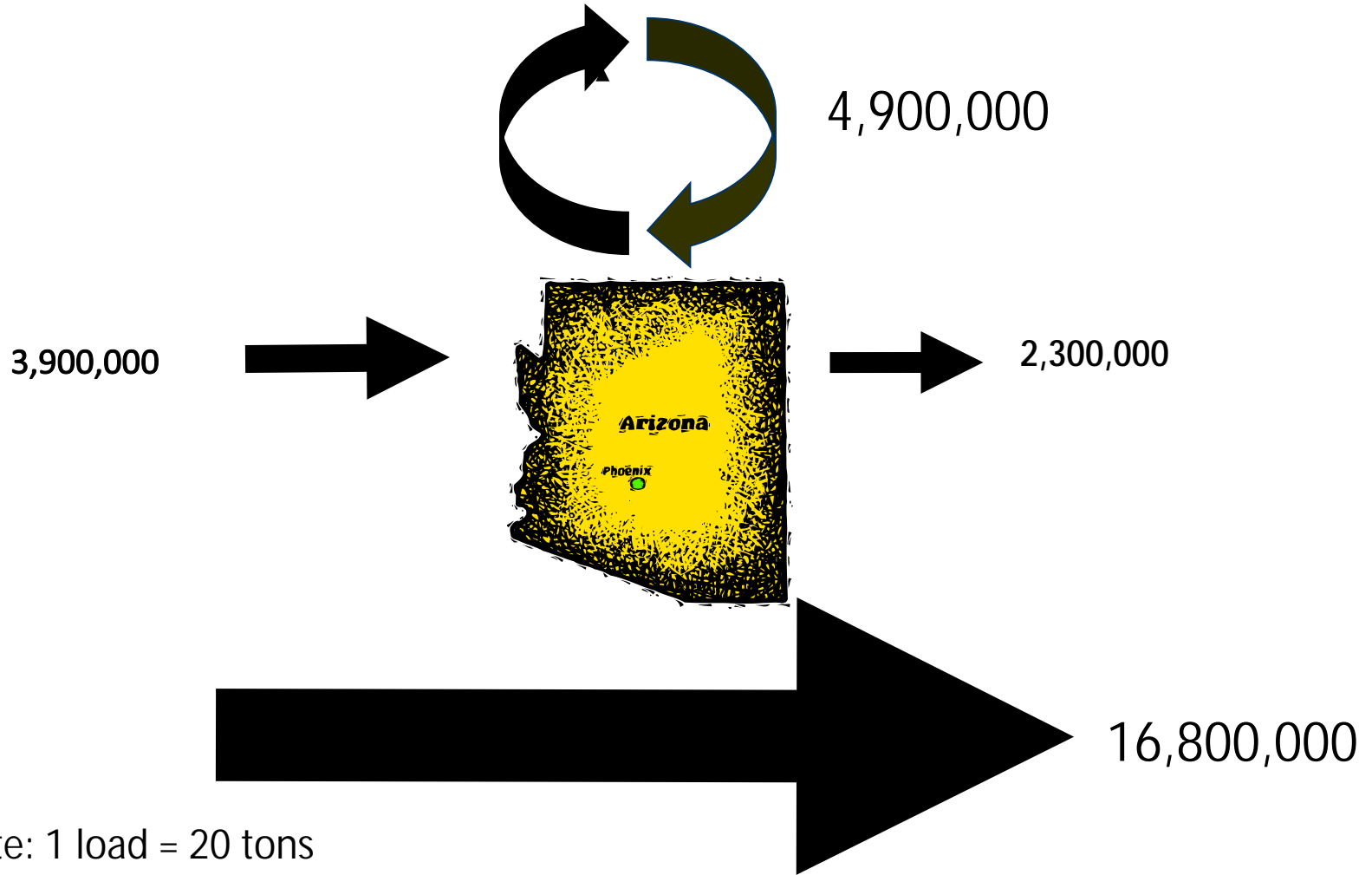
Arnold Maltz, Ph. D.

W. P. Carey School of Business

Agenda

- Current Situation
Arizona as a “pass-through” state
- Freight flows by mode and direction
- Prospects?
- Where do we go from here?

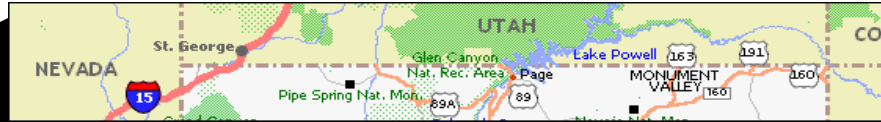
Arizona-a "Pass Through" State (equivalent loads)



Through Truck Equivalent Loads, By Route

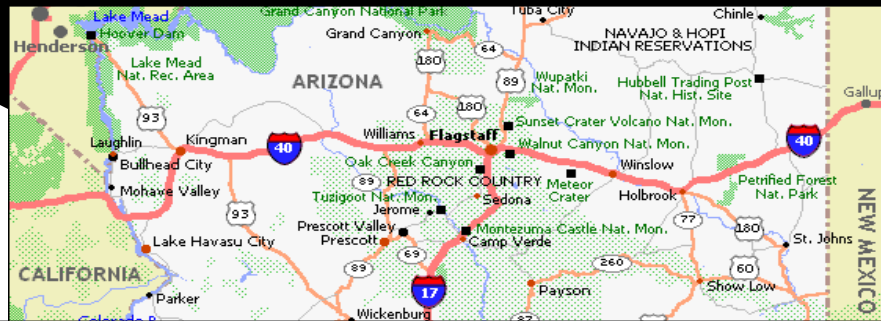
Loads

I-40



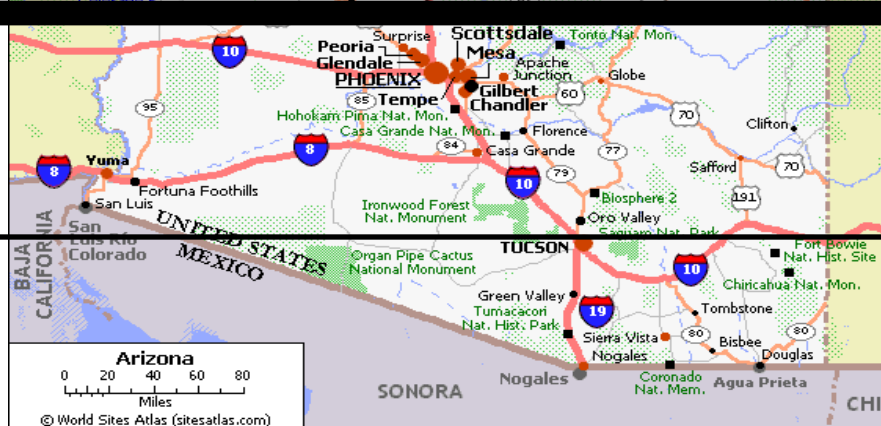
3.2MM

I-10



1.6MM

I-8

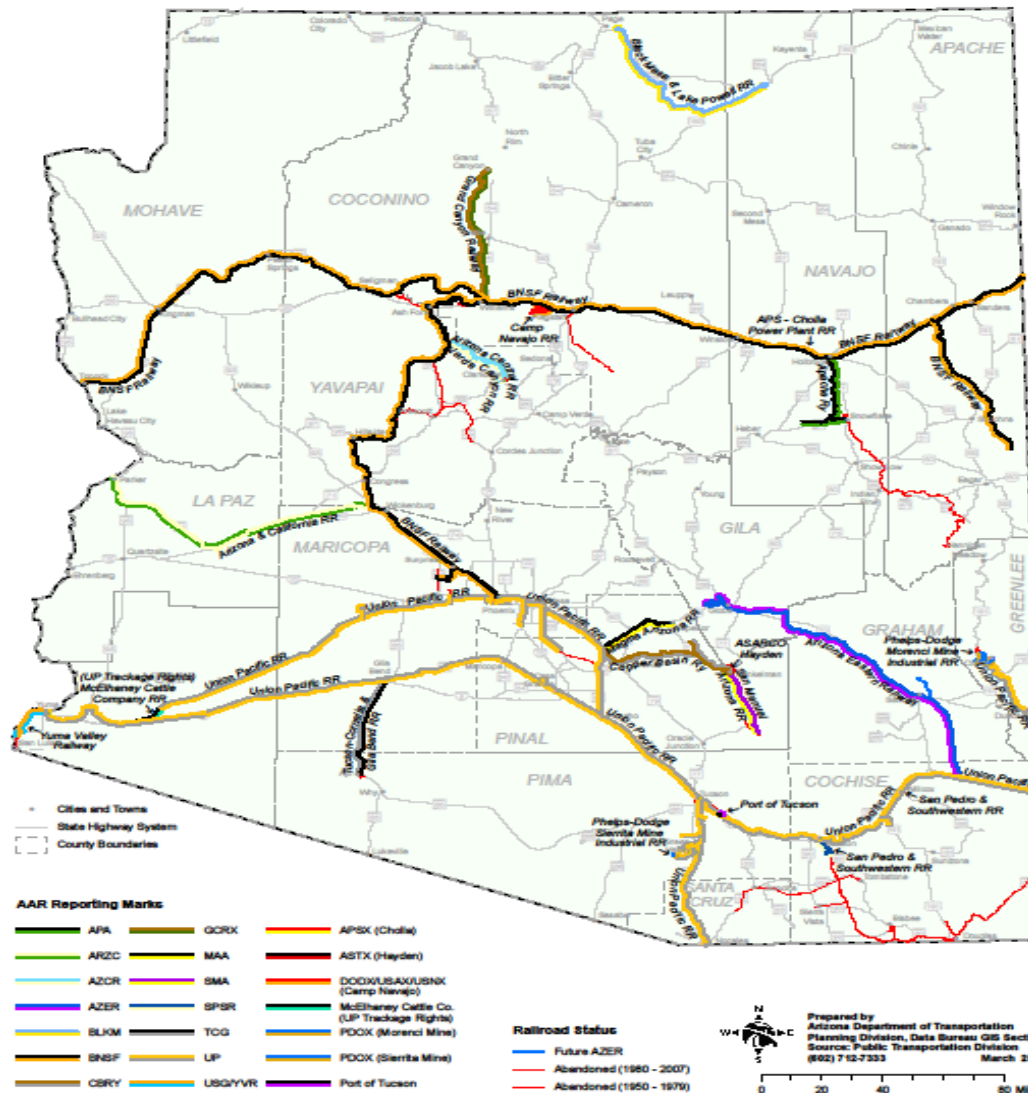


.13MM

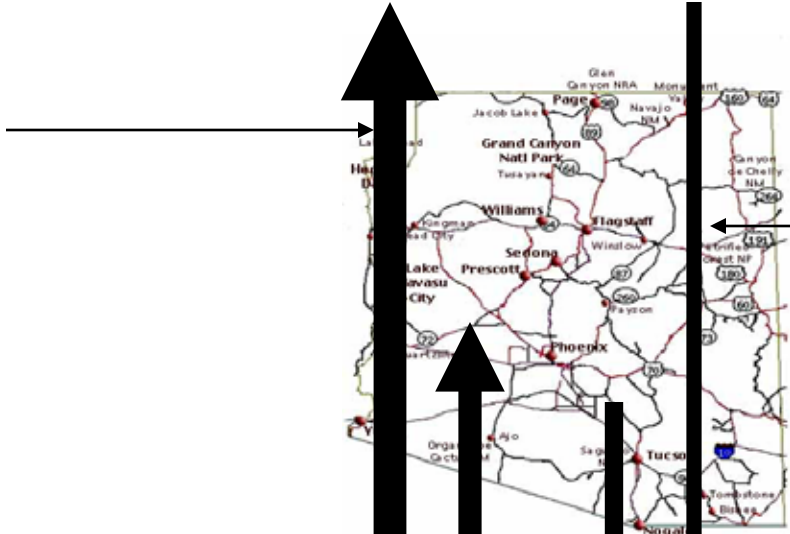
.08MM

1 Load = 20 tons

Arizona Railroads



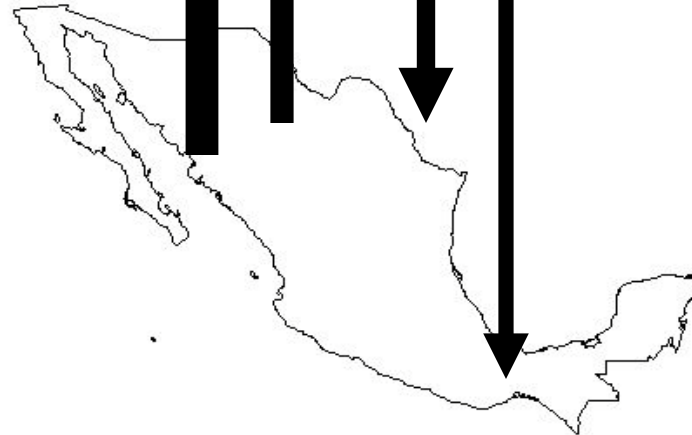
Mex to US thru AZ
200,000 loads



US to Mex
thru AZ
90,000 loads

Mexico to AZ
150,000 loads

AZ to Mex
120,000 loads



On the Drawing Board/In Process

- Nogales and Yuma Upgrade
- UP Doubletrack and BNSF yard activity
- Yuma Refinery

Concerns and Prospects

- Concerns?
 - Funding
 - Impact of increased freight throughput
 - Shift from truck to rail
 - Mexican carriers and border issues
 - Panama Canal Widening
- Prospects?
 - Punta Colonet/Canamex
 - Capturing Value
 - Inland Ports/Logistics Centers